

THINKING INSIDE THE BOX:

A Series of Leadership Support
Sessions During COVID-19



Part III:
**Critical Leader Competencies
in the midst of COVID-19**



REGION ONE EDUCATION SERVICE CENTER

OFFICE OF SCHOOL IMPROVEMENT, ACCOUNTABILITY AND COMPLIANCE



TOUGH DECISIONS AHEAD

“Effectiveness of Leadership is determined by being able to recognize the appropriateness of actions relevant to the circumstances of the situation.”

Author Unknown

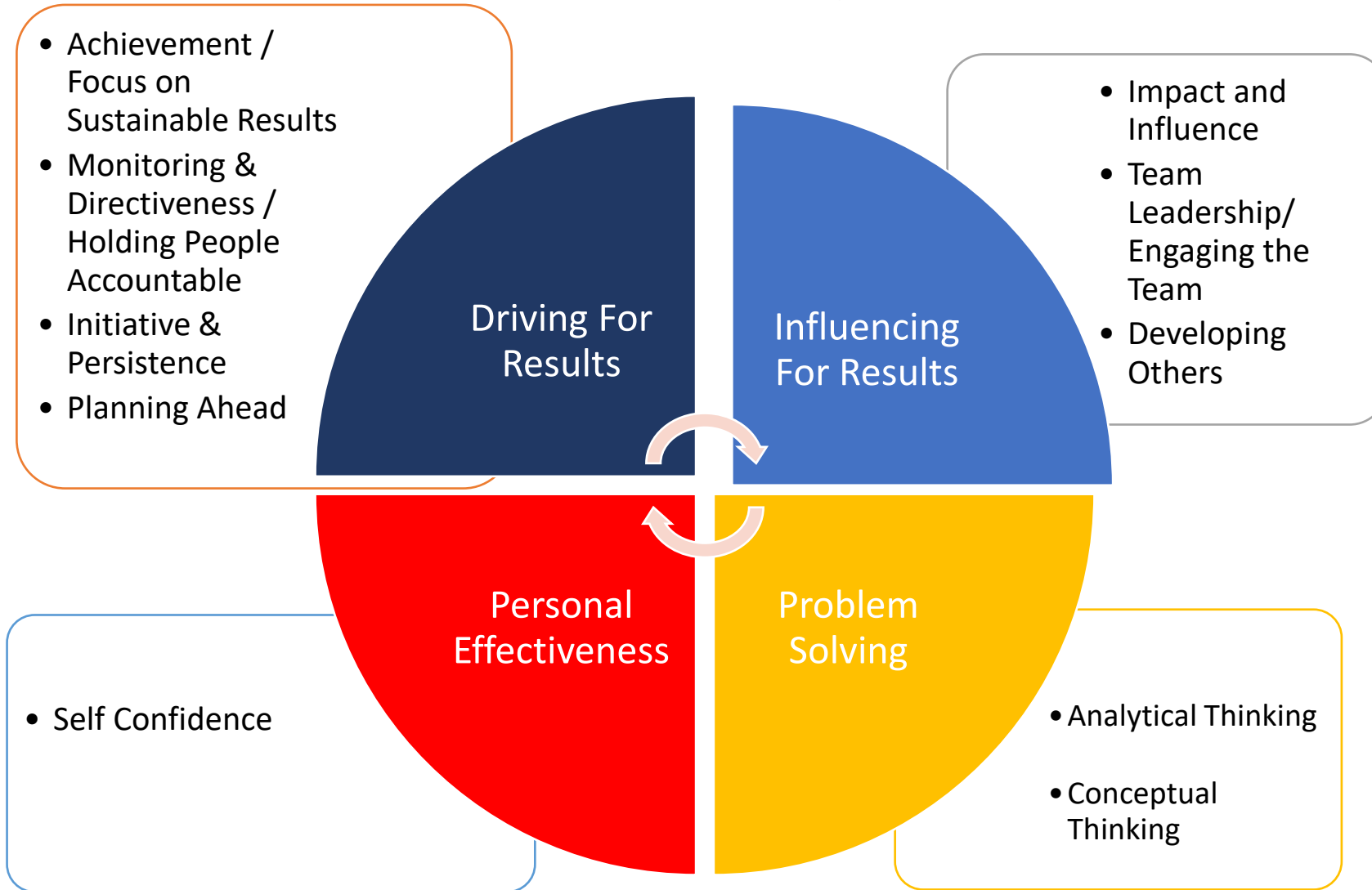


What is a Leader Competency?

A pattern of thinking, feeling, acting or speaking that causes a person to be successful in a job or role.

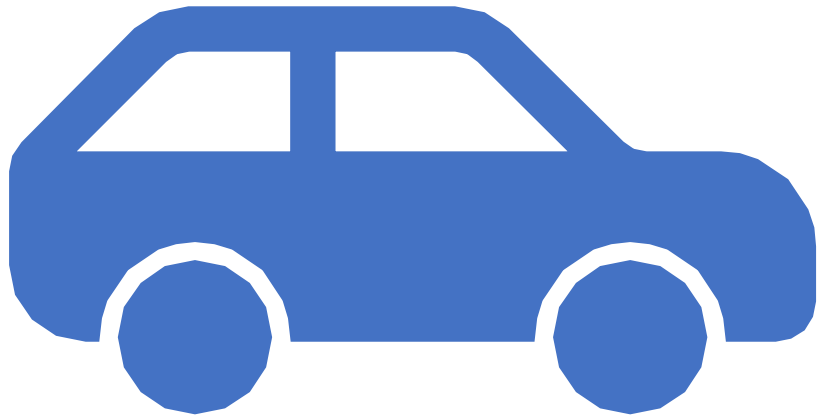


Leader Competencies



(Public Impact, 2008; Spencer & Spencer, 1993; UVA Partnership for Leaders in Education, 2014)

Driving For Results



- Achievement /
Focus on Sustainable Results
- Monitoring & Directiveness /
Holding People Accountable
- Initiative & Persistence
- Planning Ahead

Influencing For Results

Impact and Influence



Team Leadership /
Engaging the Team



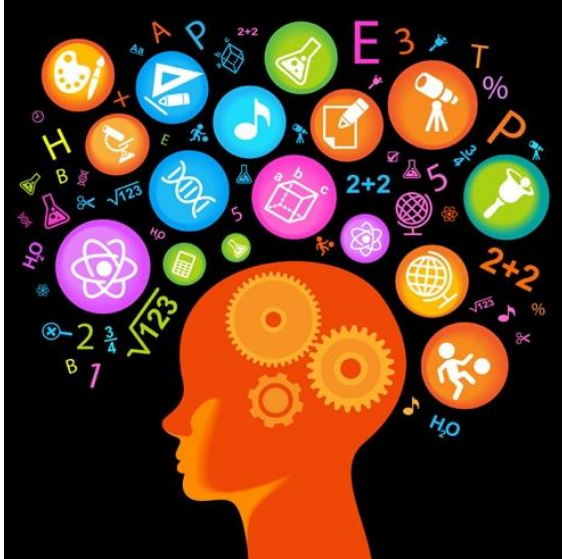
This Photo by Unknown Author is licensed under [CC BY-NC-ND](#)

Developing Others



Problem Solving

Analytical Thinking



Conceptual Thinking



Personal Effectiveness

Self Confidence



Impactful Leader Actions

Focus on a Few
Early Wins; Use
the Momentum

Lead a
Turnaround
Campaign

Get the Right
Staff; Right the
Remainder

Drive Decisions
with Open-Air
Data

Break
Organization
Norms

Do What Works;
Raise the Bar

SchoolTurnarounds.org ©Public Impact 2016.



Sources

- https://publicimpact.com/wp-content/uploads/2009/09/Turnaround_Leader_Competencies.pdf
- <https://www2.deloitte.com/global/en/insights/economy/covid-19/heart-of-resilient-leadership-responding-to-covid-19.html>



Tammie L. Garcia, Administrator

956-984-6173

tgarcia@esc1.net

Ruben Degollado, Director

956-984-6185

rdegollado@esc1.net

Rosey Guerra, Effective Schools Lead

956-984-6145

rosguerra@esc1.net

Francene Phoenix, Effective Schools Lead

956-984-6027

fphoenix@esc1.net

Aminta Silva, Effective Schools Lead

956-867-8424

amisilva@esc1.net





Intellectual Property Statement

All materials, content, and forms contained in this training/presentation are the intellectual property of the Region One Education Service Center and are intended for use by session participants at the classroom, campus, or district level only. Materials are to be used "as is" without modification.

Materials may not be used for personal benefit or financial gain or for use outside of the school system.