



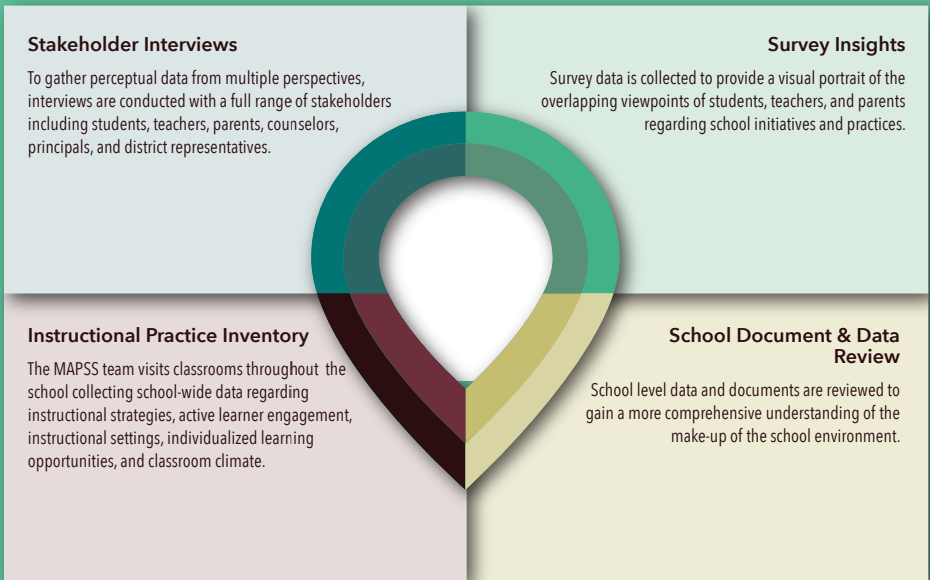
SCHOOL

# MAPSS

MAPPING A PATHWAY  
TO STUDENT  
SUCCESS

# MAPSS PROVIDES

- a **comprehensive campus review process** designed to effectively inform improvement, strengthen strategic planning efforts, and stimulate sustainable change.
- **real time observations** of your **current school environment** and insights from the voices of your own staff, students, and families.
- a **straight forward, user-friendly report** generated from a team of educational experts.



# MAPSS PROCESS

The MAPSS process commits a highly qualified team of educational experts to the campus to:

- study **data** specific to your school
- make an **on-site visit** to your school
- facilitate **interviews** of students, educators and parents
- conduct **classroom observations** throughout your school
- analyze **survey results** from your student, teacher and parent surveys
- compile a **personalized report** regarding the current state of your campus

# MAPSS BENEFITS

- A complete scan of the school environment that generates targeted feedback and **prioritized areas for action** organized around the Critical Success Factors (CSF) and Support Systems found within the **Texas Accountability Intervention System (TAIS)**, and aligned with the **Elementary and Secondary Education Act (ESEA) Turnaround Principles**.
- Data that identifies and provides an **enriched understanding** of current school practices as collected through survey, interview, and observational protocols.
- Guidance in **identifying resources** that support the unique improvement efforts of the school.



[www.MAPSSedu.net](http://www.MAPSSedu.net)

Follow us on Twitter @MAPSSedu

For more information or to schedule a visit please contact:

**Region One Education Service Center  
Center for Excellence in School Turnaround**

Ruben Degollado  
[rdegollado@esc1.net](mailto:rdegollado@esc1.net)  
(956) 984-6185

**Laredo Extension Office**

Dr. Darlene Rogers  
[drogers@esc1.net](mailto:drogers@esc1.net)  
(956) 795-0000

**Brownsville Extension Office**

Anabel Rangel  
[arangel@esc1.net](mailto:arangel@esc1.net)  
(956) 984-2120